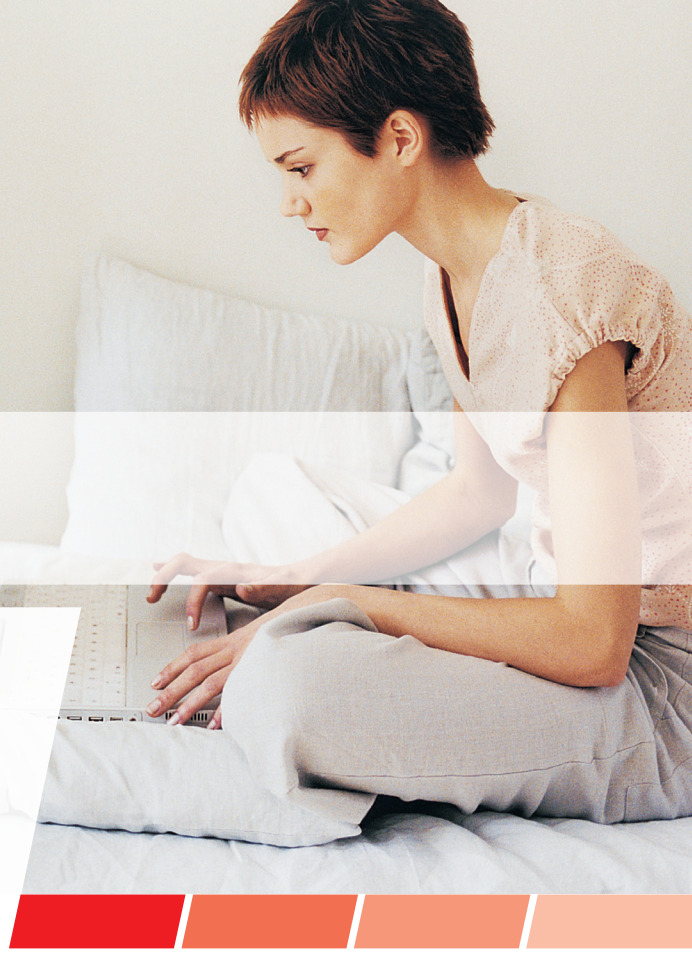


THOMSON

THOMSON TG782 Wireless VoIP Gateway



Data Voice Video



Best in Class in Digital and Voice Communication

The THOMSON TG782 is a Voice over IP Gateway allowing ADSL connectivity while providing Voice over IP functions for residential users. The THOMSON TG782 offers next to 4 Ethernet ports, an additional 802.11b/g wireless LAN interface, and supports ADSL2+. It is also backwards compatible with ADSL offering autonegotiation capability.

Home Networking with Easy Installation

Like all THOMSON gateways, the THOMSON TG782 is provided with the Home Install Wizard, making the setup of a wireless home network as easy as clicking a button. No more helpdesk calls, just click and you are ready to go. The Home Install Wizard performs comprehensive system checks before and during the installation and setup process, and validates all user inputs to guarantee the end user a secured wireless connection to the Internet.

Features at a Glance

- Wireless networking on-board: 11b/g
- ADSL2+ with integrated modem
- 2 FXO analogue ports
- 1 FXS port for phone or fax
- 4 Ethernet ports to connect multiple devices, such as PCs, laptops, set top boxes...
- Remotely manageable - TR-069, TR-104, TR-098, TR-111
- Built-in firewall
- UPnP
- Optional integrated filter

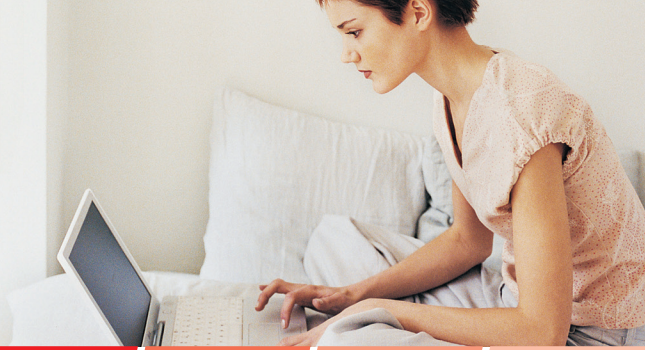
UPnP AV



THOMSON

THOMSON TG782

Wireless VoIP Gateway



I Voice over IP

The THOMSON TG782 offers two phone connectors to accommodate a phone and/or fax. Once the gateway is registered with a VoIP service, regular phone calls can be conducted over the Internet with all the benefits of IP Telephony. The gateway offers a wide range of services like caller ID, CLIR, call waiting, call forwarding, 3-way conference and message waiting notification.

I Easily Manageable

The THOMSON TG782 is completely designed according to the TR-069 Data Model, through which the device can be configured remotely. In addition, TR-104 for VoIP is implemented for the configuration and management of all voice services.

TR-037 and TR-69 enable auto-configuration of network bandwidth according to service needs, allowing seamless integration with the network's provisioning system.

I Advanced in Security

The integrated firewall guarantees users ultimate network security. The firewall minimizes undesired service impact and provides stateful inspection of packets. An integrated Denial of Service (DoS) engine monitors a wide range of attack patterns, and logs potential security breaches to a local cache or remote server.

The THOMSON TG782 also supports powerful wireless security mechanisms, such as Wi-Fi* Protected Access (WPA™), Wired Equivalent Privacy (WEP™) encryption, and a physical registration button. This allows users to communicate and access data with efficient link quality and the highest level of network security. Unwanted content filtering on the Internet is also integrated.

Technical Specifications

Hardware Specifications

Interfaces

WAN

- RJ11 DSL line port
- Optional ISDN (Annex B)
- Full FXO

LAN

- 4-port autosensing 10/100Base-T auto-MDI/MDI-X Ethernet switch
- 2 FXS POTS interfaces
- Wi-Fi IEEE 802.11b/g on board

Extras

Reset button

WLAN registration button (WPS)

Dimensions (h x d x w)

41 x 167 x 223 mm (1.6 x 6.6 x 8.8 in.)

AC Voltage

100-240 VAC (switched mode power supply)

Temperature

0° - 40° C (32 - 104 F)

Humidity

20% to 80%

DSL Modem Specifications

- Supports Multi Mode Standard
- ADSL compliance: ANSI T1.413 Issue 2, ITU-T G.992.1 Annex A, B (G.dmt), ITU-T G.992.2 Annex A, B (G.lite), ITU-T G.994.1 (G.hs)
 - Maximum Rate: 8 Mbps for downstream and 1 Mbps for upstream
- ADSL2 compliance: ITU-T G.992.3 Annex A, B, L, M (G.dmt.bis), ITU-T G.992.4 Annex A, B, L, M (G.lite.bis)
 - Maximum Rate: 12 Mbps for downstream and 1.5 Mbps for upstream
- ADSL2+ compliance: ITU-T G.992.5 Annex A, B
 - Maximum Rate: 24 Mbps for downstream and 3 Mbps upstream
- Supports Dying Gasp (optional)

Management

- User Friendly GUI via HTTP and HTTPS
- GUI Easy installation wizard (OS independent)
- On demand Remote GUI assistance (helpdesk)
- Web-browsing Intercept (install / diagnostics)
- PC (Wireless) Home Network Install Wizard
- TR-69 CPE WAN Management Protocol
- TR-104 Voice Service Provisioning
- TR-98 Internet Gateway Device Management
- TR-111 Home Network Device Management
- TR-140 Storage Service Provisioning
- TR-64 LAN Side Configuration
- Zero-Touch Auto-Provisioning

Services

- USB DECT dongle support
- Parental control (Website Content Filtering) (optional)
- Open architecture for 3rd party application development

Wireless Performance and Security

- IEEE 802.11b/g access point
- Wi-Fi® CERTIFIED*
- WEP™, WPA™-Personal / WPA2™-Personal certified*
- Wi-Fi Multimedia - WMM™ certified*
- Wireless Protected Setup (WPS certified*)
- Up to 4 SSID support
- Security and service segregation per SSID
- Dynamic rates switching for optimal wireless rates
- Manual/auto radio channel support

Firewall Security

- Stateful Packet Inspection Firewall
- Customizable Firewall Security Levels
- Intrusion Detection and Prevention (DoS, SYN Flood, Ping of Death, Fraggle, LAND, Teardrop, etc.)
- Website URL Filtering
- DMZ

Enabling Technologies

- Quality of Service: ATM, Ethernet, Wi-Fi, IP
- FLEXIBundle: Multi Role User Authorization
- Hyper-Nat: Symmetrical NAT with Application Helpers
- Game and Application Sharing NAT PortMaps
- «SIM-lock» Provider Locking
- DHCP Conditional Serving & Relay, DNS Server & Relay
- IGMPv3 proxy (FastLeave)
- IGMP snooping (Full routed)
- Flexiport (any Ethernet port bridged IPTV)
- IEEE802.1q VLAN bridging, Multiple Bridge Instances

Technical Specifications

Voice over IP Features

Voice Functionality

- Signalling: SIP, MGCP(O), H.323(O)
- Codecs: G.711, G.726, G.729, Wideband (G.722), T.38
- Flexible Telephone number per FXS and DECT Handsets, including Common Numbers
- Interoperable with main market softswitches

FXO

- Fully flexible dial plan for PSTN/VoIP outgoing calls
- Prefix for PSTN/VoIP switch
- Lifeline backup: manual and automatic PSTN / VoIP
- Incoming call detection on PSTN

Supplementary and Advanced Services

- Call waiting (on call basis)
- Caller Identification
- Call forwarding (No answer/Busy/Unconditional)
- Call transferring
- Call hold, call return
- CLIP (Calling Line Identification Presentation)
- CLIR (Calling Line Identification Restriction)
- CNIP (Calling Name Identification Presentation)
- CNIR (Calling Name Identification Restriction)
- Fax transparency
- 3-way conference
- MWI (Message Waiting Indicator)
- Missed call e-mail
- Click to dial
- Warm line
- Call Completion to Busy Subscriber
- Forced FXO
- Abbreviated number
- Common DECT number
- Common number in/outgoing call
- Anonymous Call Rejection
- Distinctive Ringing
- Voice Mail on No Reply
- Support for Secondary Outbound Proxy
- DNS NAPTR, DNS SRV

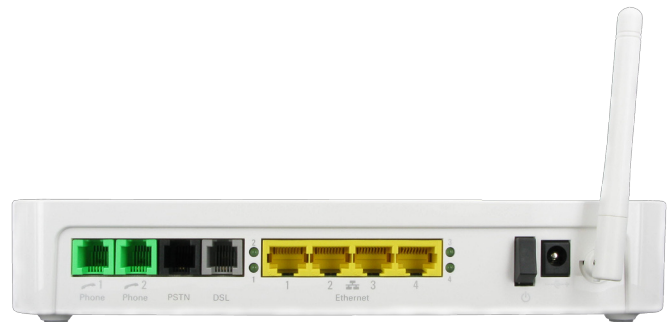
Content of the Box

- Wireless VoIP Residential Gateway
- Power supply unit
- ADSL cable (RJ11)
- Ethernet cable (RJ45)
- Setup CD and Leaflet
- Filter or splitter (optional)
- Foot and inlay (optional)

* Wi-Fi CERTIFIED™ is a registered certification mark and WPA™, WPA2™, WPA™-Personal, WPA2™-Personal, and WMM™ are trademarks of the Wi-Fi Alliance.

** UPnP™ is a certification mark of the UPnP™ Implementers Corporation.

*** DLNA™ and DLNA™ Certified are registered trademarks of the Digital Living Network Alliance.



TG782 back panel

For more information

THOMSON | 46, quai Alphonse Le Gallo | 92100 Boulogne-Billancourt | France
Tel. : 33 (0) 1 41 86 50 00 | Fax : 33 (0) 1 41 86 56 59 | www.thomson-broadband.com

© 2009 Thomson Inc.- Trademark(s) ® Registered\ -Marca(s) Registrada(s)\
Photos and features subject to change without notice.
Illustration of product finish may vary from actual color. 782_ed03

THOMSON